

AFFORDABLE CONTAINER MODULES



IQ Container Homes Ltd
Auckland, New Zealand

+64 21 1154553
info@iqcontainerhomes.co.nz
www.iqcontainerhomes.co.nz

About IQ Container Homes

IQ Container Homes is a NZ based company established in 2013 by creative entrepreneur Brenda Kelly who has a passion for small space design and affordable, sustainable housing solutions.

IQ Container Homes are constructed from new (single trip) Corten Steel shipping Containers. In addition to their transportable nature, units are designed to withstand the harshest of conditions; strong and durable, recognised as termite, earthquake, fire and hurricane resistant, providing a solid practical base for a safe sustainable dwelling.

Containers are designed to survive a life at sea so are the ideal solution for harsh coastal areas and sea spray zones.

Along with these benefits, IQ Container Homes are constructed using environmentally responsible materials and help reduce long term running costs with built in features such as superior insulation, double glazed windows and doors and LED lighting.



To better service our growing overseas market we have been working closely with a reputable, quality, china based manufacture to develop a set of standard container modules according to our designs and specifications that can be easily and affordably exported worldwide and configured on site to create any size home or lodge.

Please refer attached for details of these modules we are able to offer

In addition we can design and supply custom modules to suit your needs. There is minimal charge for design and estimation service to cover our time and expenses should you wish to engage us for this.

If you have any questions or wish to purchase any of these modules, I look forward to hearing from you

Thanks & Regards,

A handwritten signature in black ink that reads "Brenda Kelly".

Brenda Kelly
Director
IQ Container Homes Ltd



Please note while 3m wide models are pictured here, due to restrictions at some ports, modules may need to be manufactured using standard 2.4m wide containers.

Each module comes lined and insulated with LED lighting and conveniently located power points. Windows and doors are all aluminium double glazed. Natural timber look flooring. Exterior of container can be painted your choice of colour.

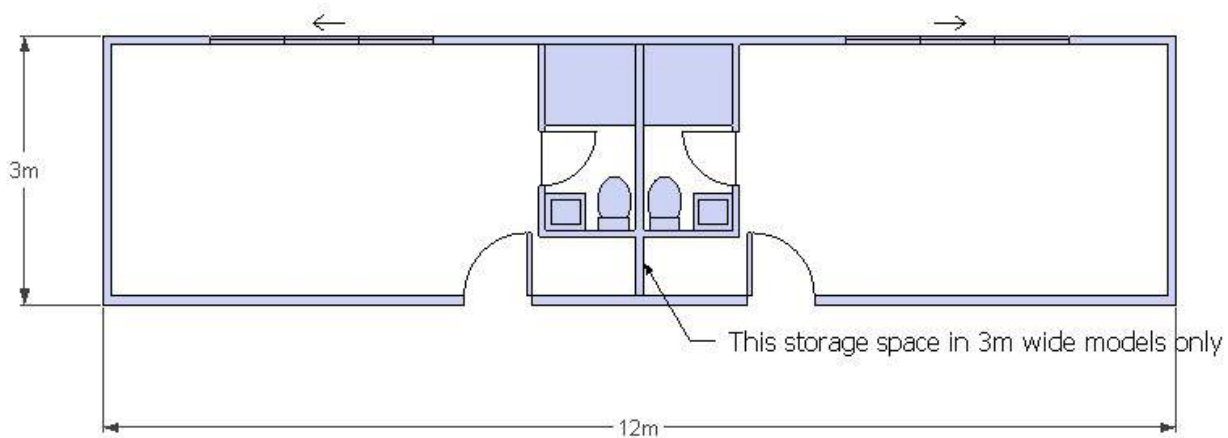
Please note appliances are excluded. We recommend you source these locally so warranties and repairs can be easily honoured if required.

Module 1) 2 x bedrooms each with bathroom

Each bedroom features an external glass sliding door entry allowing it to open up onto a private deck or courtyard. Single door entry on the opposite side is also provided allowing modules to be connected by a covered walkway or internal corridor.

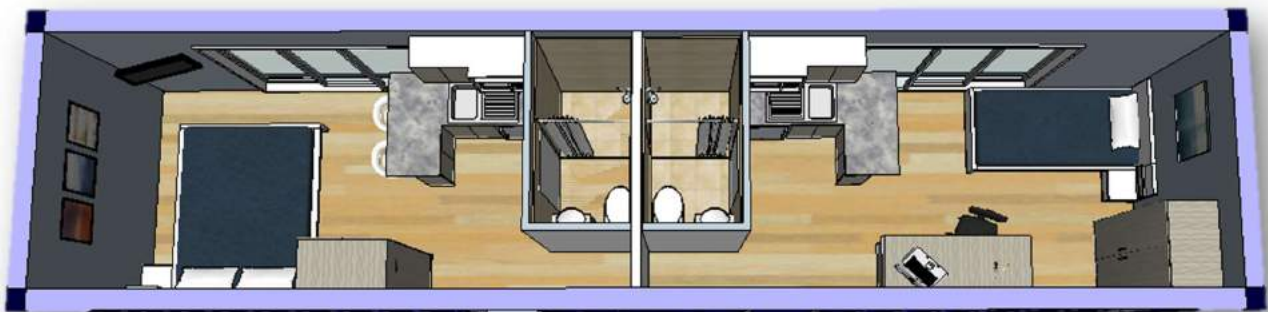
3m wide models have additional space behind entry door for storage.

Bathroom features shower, flush toilet and small basin.



Example fitout:

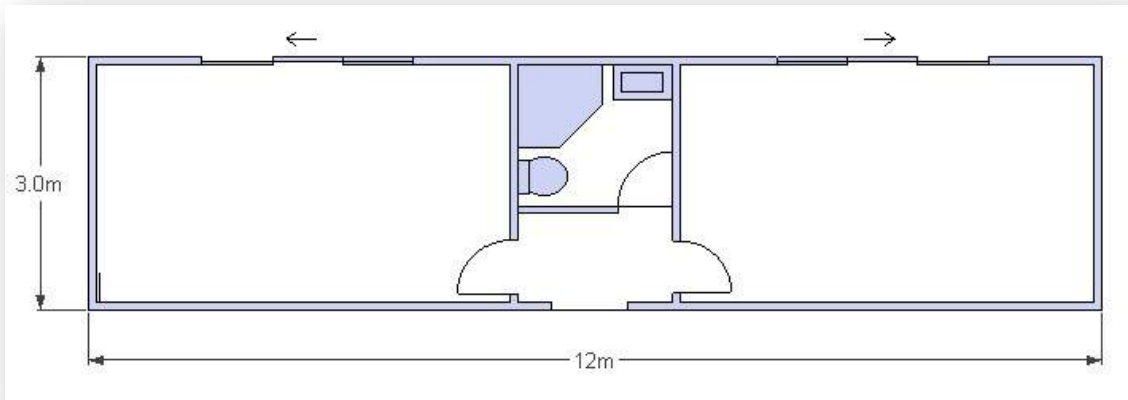
Double or single room for short term or student accommodation. Includes kitchenette per room (refer page ___ for kitchenette options)



Module 2) 2 x rooms with shared bathroom

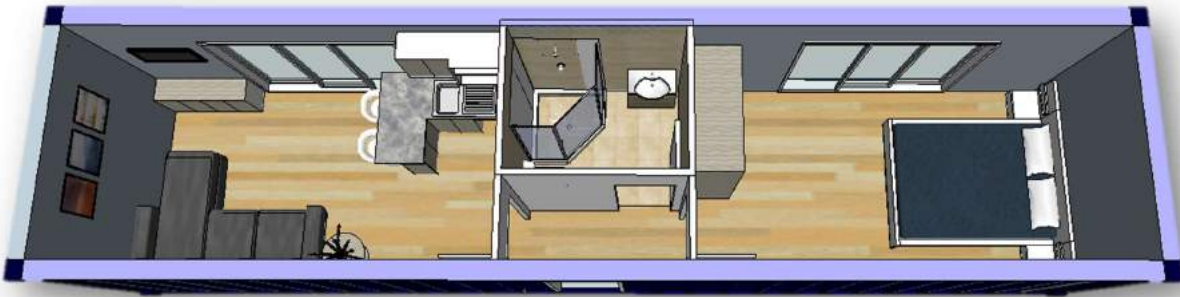
As per module 1 each room features an external glass sliding door entry allowing it to open up onto a private deck or courtyard. Single door entry on the opposite side is also provided.

Bathroom features shower, flush toilet and vanity basin



Example fitout:

Use each room as a separate bedroom or bunk room in shared accommodation, utilise as 1 x 2 bedroom motel unit or 1 bedroom accommodation by utilising one room as living and other as bedroom as in the below example



Bathroom 3m wide container
(1950x1750 module)



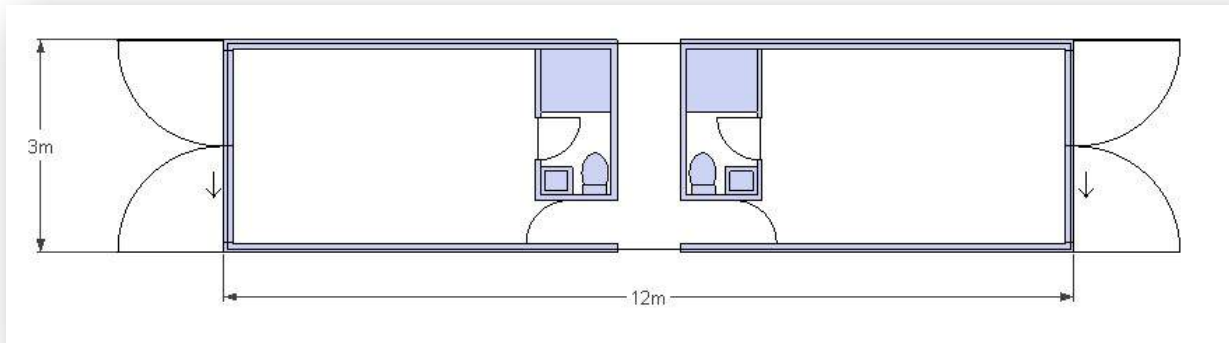
Bathroom 2.4m wide container
(2100x1500 module)



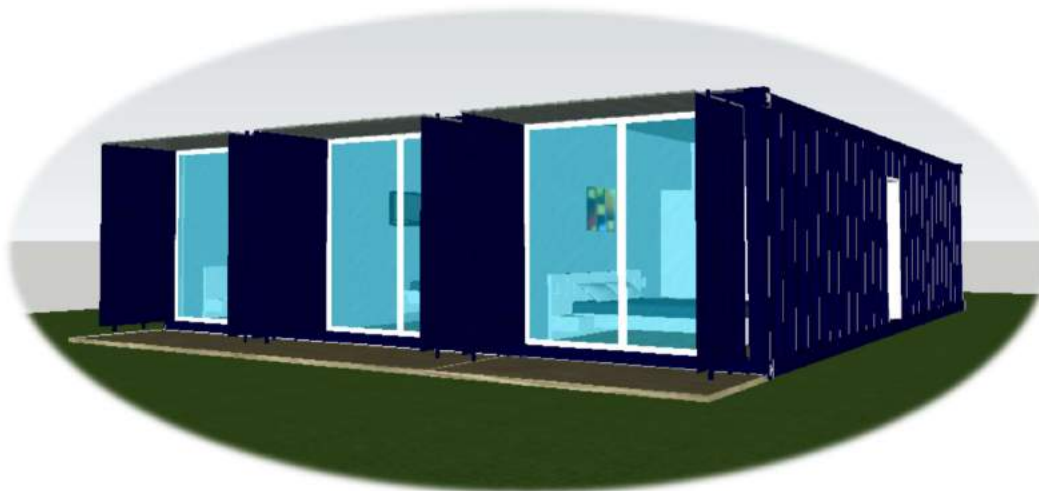
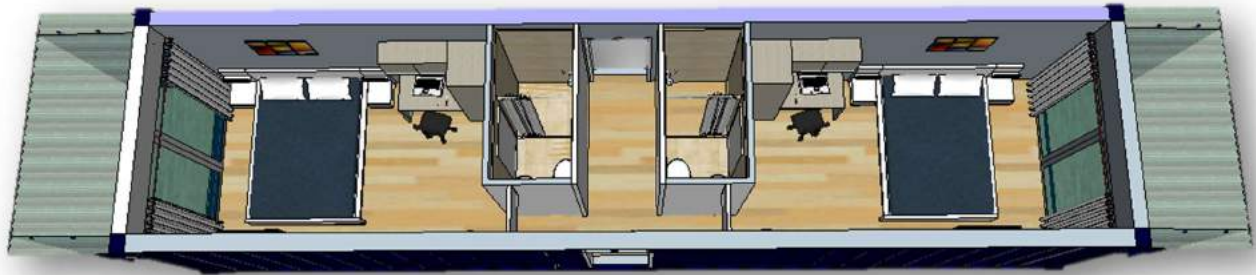
Module 3) 2 bed, 2 bath.

Container doors remain in place to create sheltered deck area. Can be closed off in times of extreme weather or for added security when absent.

Internal corridor allows several modules to be joined in parallel. Available in 3m wide containers only



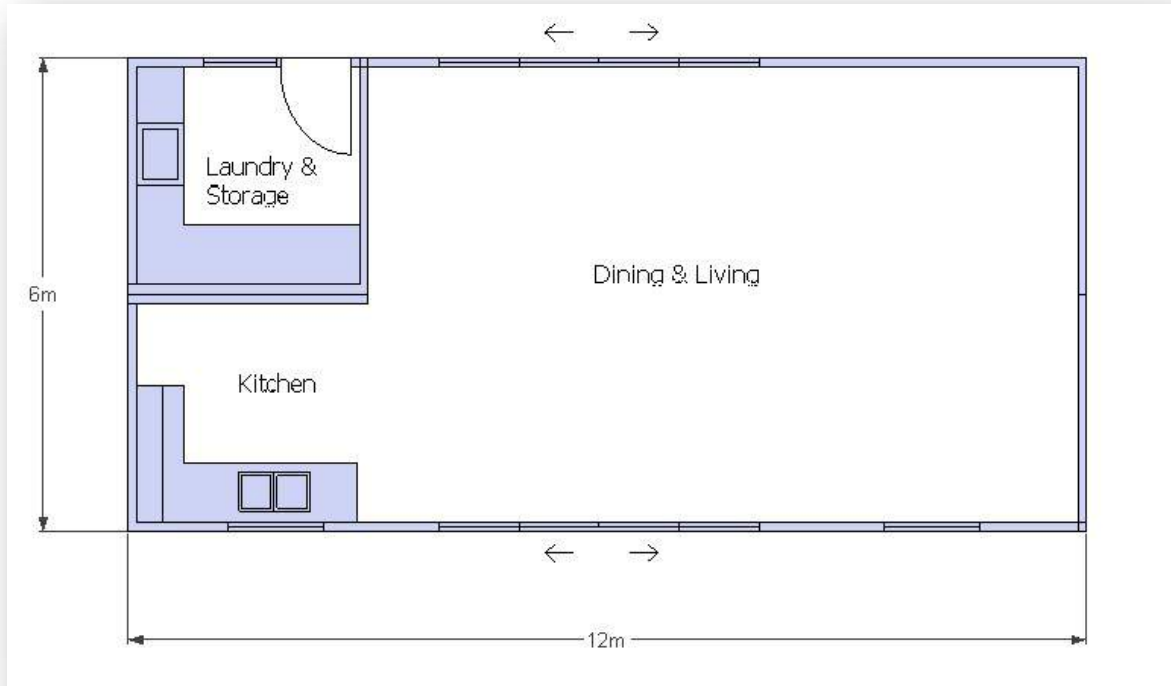
Example fitout



Module 4) 2x containers. Open plan Kitchen, Dining, Living module with separate Laundry / storage room

Kitchen features double bowl sink, under bench cupboards & 2x drawer units. Overhead cupboards for food storage. Space and power for free standing oven/hob and rangehood. Space and power for fridge

Laundry features tub & tapware, space and power for washing machine and dryer. Under bench cupboards. Full height storage cupboard



Example fitout:



Modules can be configured however you like to suit your site and joined by decking and an external roof if desired. Each room has individual external entry, configure to make the most of a view or landscaped outdoor area.

Ideal as home for extended family, guest accommodation, lodge, motel, backpackers, boarding house or seasonal workers accommodation.

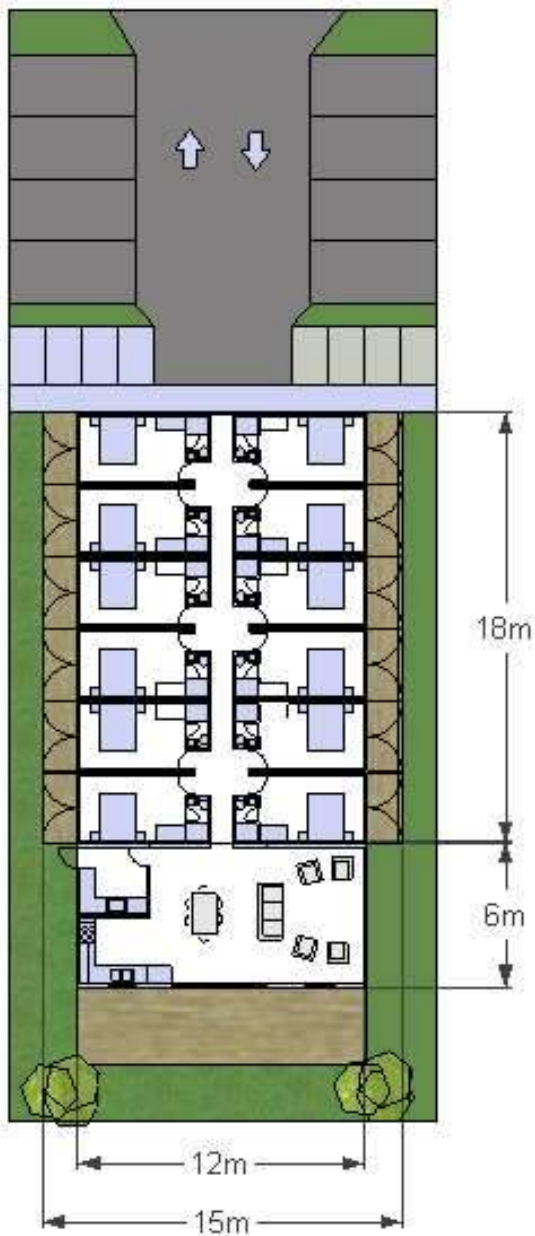
Example configuration: 6 bed, 4 bath home / lodge / backpackers featuring modules 1,2 and 4.
Sleeps 6-24 depending on furnishings.



Depending on your location and weather conditions;

- Install a covered roof and entrance door to corridors to enclose units & provide additional security
- Cover walkways for shelter from sun &/or rain but leave open for natural breeze
- Leave units separate and walkways open if climate suitable



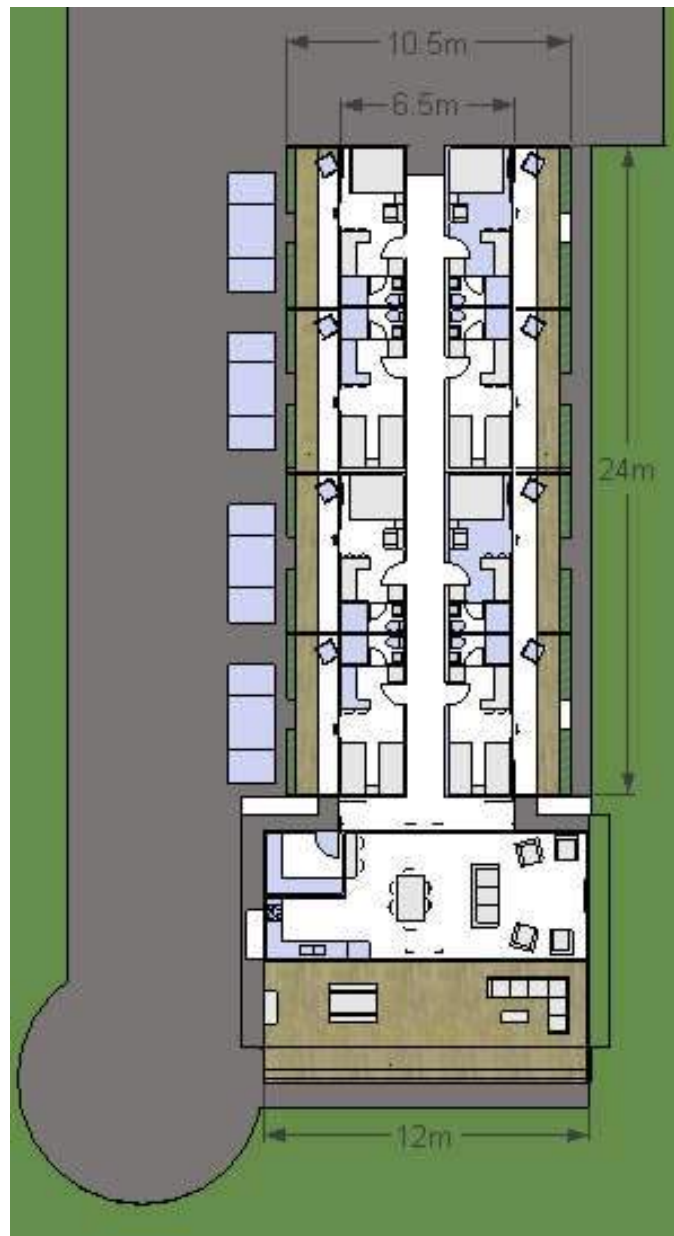


Example 12 bed accommodation utilising 6 x modules 3 and 1 x module 4

Each bedroom features private bathroom and small sheltered deck

Communal kitchen and living area

Guest parking, storage facilities and space for bikes, rubbish and recycling



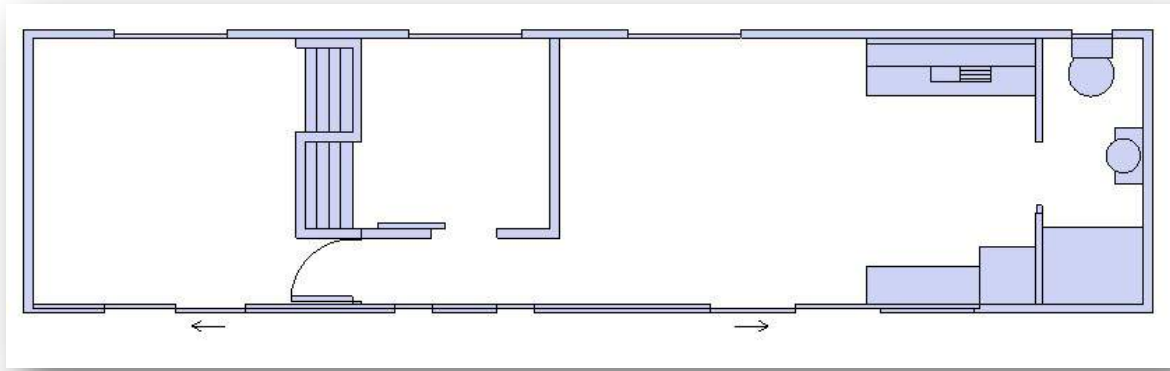
Example 8 bed accommodation utilising 4 x modules 1 and 1 x module 4

Each bedroom features private bathroom, mini kitchen and decking

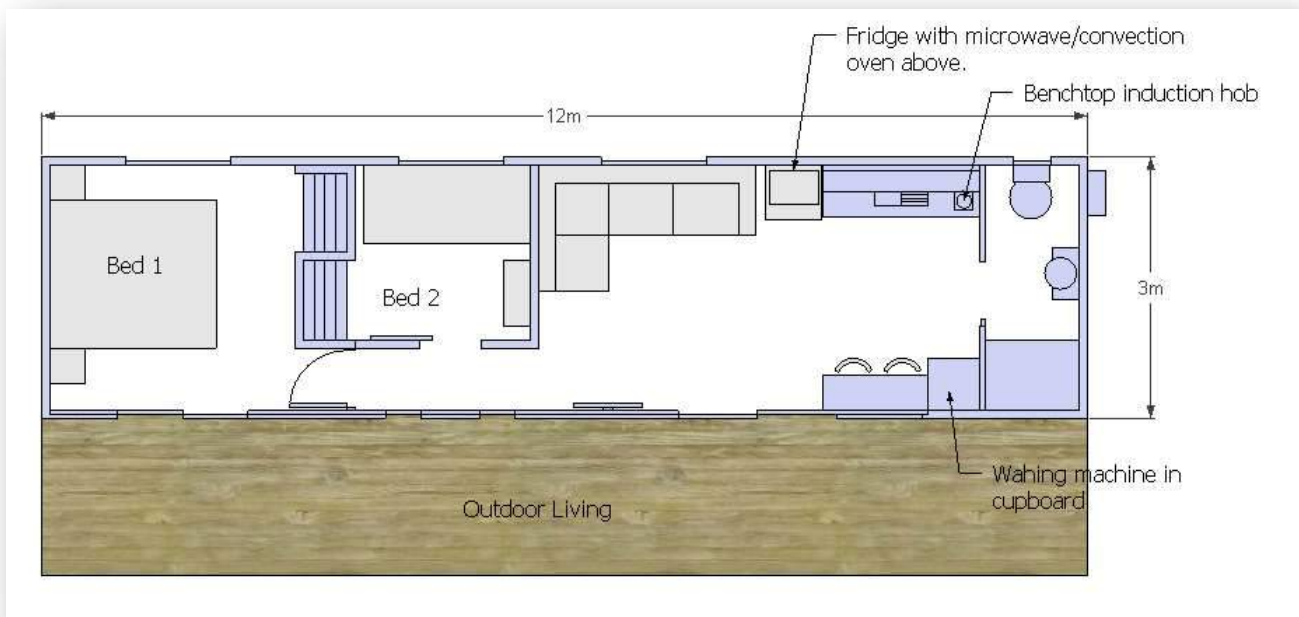
Larger communal kitchen and living area.

Some parking provided in front of guest rooms

Module 5) 2 bed with living room, kitchen and bathroom



Example fitout:



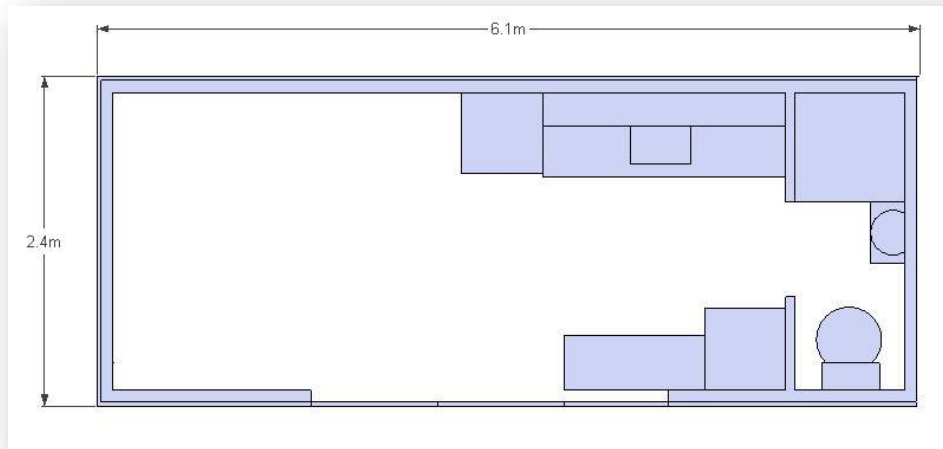
Module 6) 20' studio unit with kitchen and bathroom

Constructed from a smaller 20' high cube container this home is easier to transport and locate than its larger counterparts.

A small bathroom accommodates a shower, vanity and toilet.

Kitchen features single sink and tapware, underbench cupboard, drawer unit, space and power for small fridge freezer. Overhead cupboards, full height pantry or wardrobe, space for microwave / convection oven.

Opposite wall features additional storage cupboard with provision for washing machine. Breakfast bar seating for 2



Example Fitout:

Recommend furnish with queen wall bed that folds over couch. Microwave convection oven and portable benchtop induction hotplate if required for cooking.



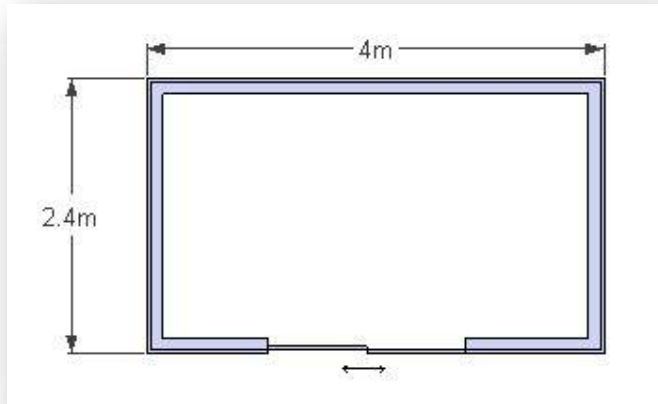
Module 7) 10m² sleep-out or office

This unit is a blank canvas and ideal for a sturdy sleepout or office.

It is manufactured from a custom container measuring approximately 4m long and is sold in sets of 3 for ease and affordability of transport.

Features double glazed sliding entry door, LED lighting and power points. Additional windows for cross ventilation or a fold up deck for added security are popular upgrades. Customise as you see fit

Ideal for use as a teenage retreat, man cave, site office, home or commercial office, artists studio, games room, sleepout or guest accommodation.



With fold down deck and fold up awning for added security and weather protection

Our units are constructed using new ISO certified Corten steel shipping containers according to international standards. Our manufacturer holds various certificates and independent approvals and has extensive experience in supplying custom container modules worldwide.



Compatible Standards

Structure		Electric			
Chinese GB	CSA G40.20/21-04	SS-E	AS 1851	AS/NZS 3008	IEC 60898-1
AWS D1.1	AS/NZS 1170.2	SS-T	AS 2665	AS/NZS 3013	IEC 61008-1
ANSI/AWS A2.4	AS/NZS 1554	AS 4508	AS/NZS 3000	AS/NZS 1276	IEC 61643-1
BS EN ISO 15607	AS/NZS 2589	AS 1670	AS/NZS 1668	AS/NZS 1571	IEC 60947-3
BS EN ISO 23278	AS 4100	AS 2293	AS/NZS 1768	AS/NZS 3760	CEC 2012
EN 895	ISO 15614	AS 3786	AS/NZS 2293	AS/NZS 3947	Chinese GB
EN 1291	JB 4708	AS 1668	AS/NZS 2381	IEC 60364	JGJ 16-2008
EN 1090-1	JGJ81	Plumbing		AS 3500	NPCC 2010
EN ISO 15609	AWS-D15.1	Decoration		NFC 2010	NBCC 2010
DIN EN ISO 5817	CSA W59-03(R2008)			NCC 2013	CSA_Z240
Explosion - proof					
DNV 2.7-1	A-60 Fire Rating	Zone 1 of flammable gas hazardous atmosphere	Explosion-proof grade: EX P IIBT3(+50- +10pa)	Air Pressurization tests compatible with IEC 60079-13	



BV Factory Approval



DNV Factory Approval



SGS CE Certificates



ISO9001:2008



ISO14001:2004



OHSAS18001:2007

Modules come fully lined and insulated with rockwool sandwich panel, double glazed windows and doors, PVC timber look flooring, LED lighting, electrical, plumbing, shower, flush toilet, vanity, kitchen cupboards, sink and benchtops as indicated.

The obtaining of local permits/consents etc is the buyer's responsibility. Modules may not be accepted in all regions and we recommend you discuss with your local governing body prior to purchase.

Modules are designed to attach to cost effective concrete or timber pile foundations. In most cases only the container corners require support. To prevent uplift in extreme weather conditions we recommend either welding or for ease of relocating, securing with a container twist lock mechanism.

We strongly recommend you do not sit these modules on the ground as air flow is required underneath the unit for maximum longevity.

If in doubt please engage the services of a local engineer to design and specify your foundations.



In addition to their transportable nature and need for minimal foundations, modules are designed to withstand the harshest of conditions; strong and durable, recognised as earthquake, fire and hurricane resistant, providing a solid, practical base for a safe, sustainable, low maintenance home.

Pricing is for the modules themselves and excludes delivery and any applicable taxes, consents, furnishings, appliances and site works such as foundations, connection to site services, decking / landscaping and additional roof if required.

Taking delivery of units and engaging local labour to complete required local legislation and site works are the buyer's responsibility. We can generally offer modules FOB ex China or CIF to your local port.

We can also arrange for the supply & installation of extras to suit your requirements such as furniture, air con units or ceiling fans, insect screens, hurricane shutters, fold up decking, curtains or blinds. Please contact us to discuss your requirements.

Pricing

Module	Layout	Pricing in USD FOB ex China 2.4m wide	Pricing USD FOB ex China 3m wide
Module 1 2 bed 2 bath		42,500	45,500
Module 1b 2 bed 2 bath 2 kitchen		46,500	49,500
Module 2 2 bed 1 bath		35,000	38,000
Module 2b 2 bed 1 bath 1 kitchen		40,000	43,000
Module 3 2 bed 2 bath		N/A	50,000
Module 4 Kitchen Laundry Living		58,000	66,500
Module 5 2 bed + robe 1 bath Kitchen		N/A	52,000
Module 6 20' studio 1 bath Kitchen		32,000	34,000
Module 7 10m2 sleepout		36,000 for set of 3 (12,000 each)	N/A

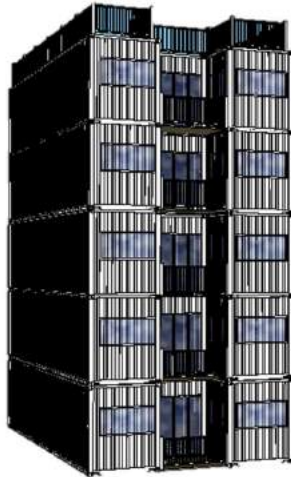
*Pricing valid as at 1st April 2018 and subject to change. Please note visuals are indicative only

For larger developments, office blocks, schools, restaurants, hotels and apartments we can design and price custom modules to suit your needs.

There is a minimum USD900 upfront cost for our custom design and estimation service should you wish to engage us for this. Buyer will be responsible for all official drawings and permits if required, ground work and connection of units; we offer construction & internal fitout only.

Some example custom designs:

5 storied apartment block with rooftop deck.
Each level comprised of 3x40' containers featuring 2 bed 2 bath apartments



5 storied apartment block
Each level comprised of 1x40' container
1 bed apartment



School classrooms and toilet block with covered outdoor area



Café / Restaurant with roof top bar



Transportable bar with rooftop viewing platform



Retail outlet with fold up decks for added security

Please contact us to discuss your requirements. Email info@iqcontainerhomes.co.nz